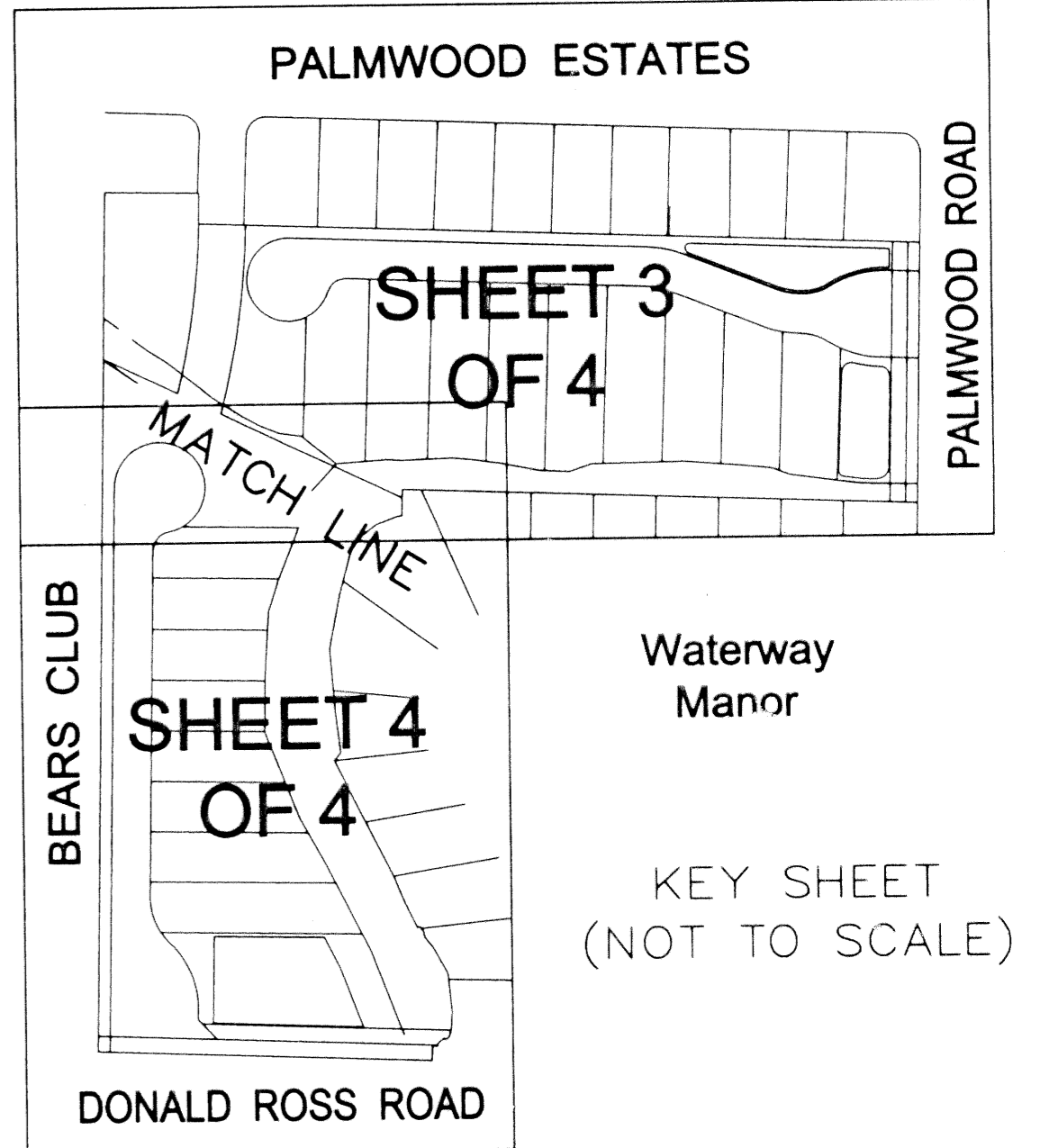
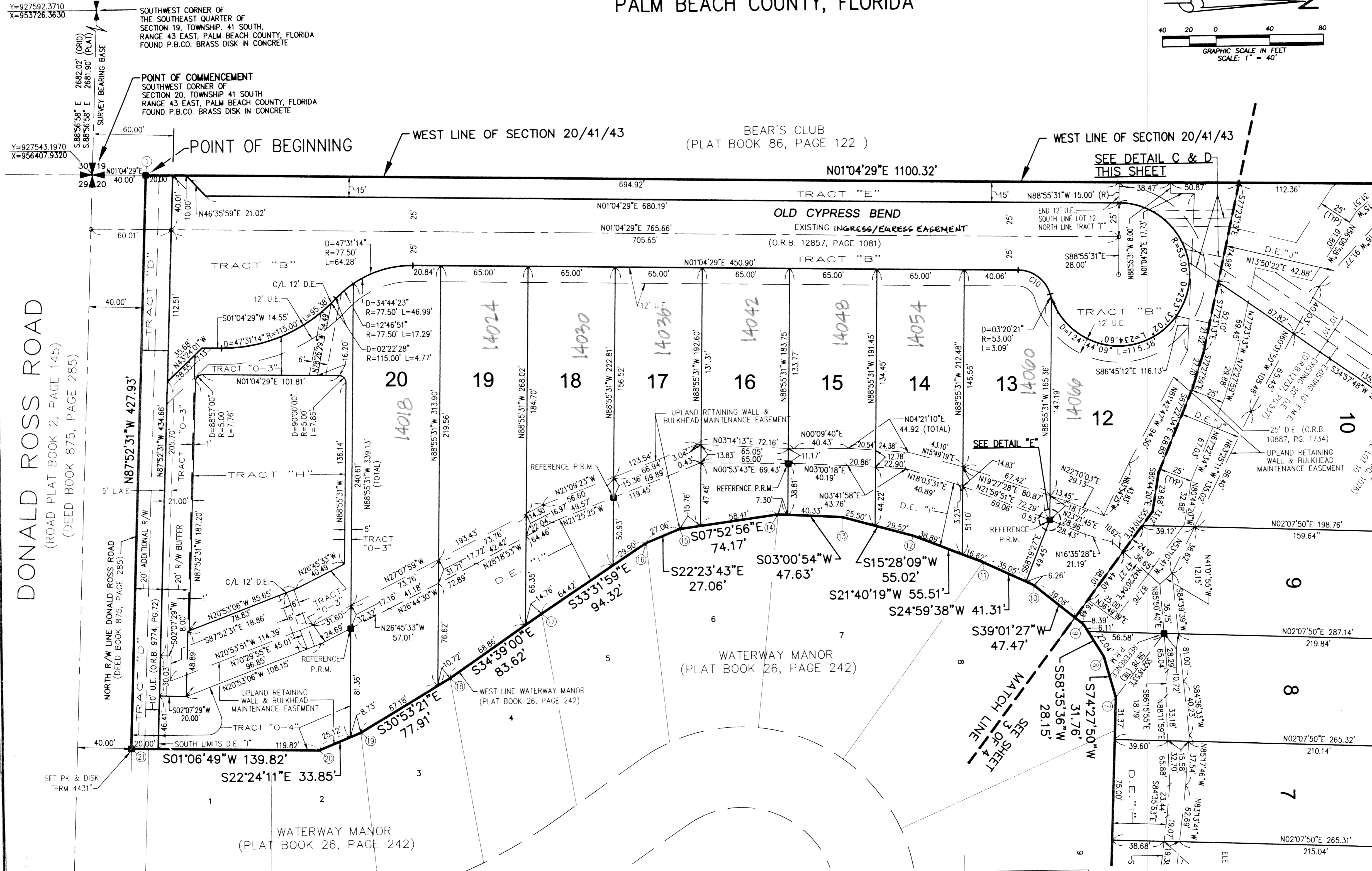
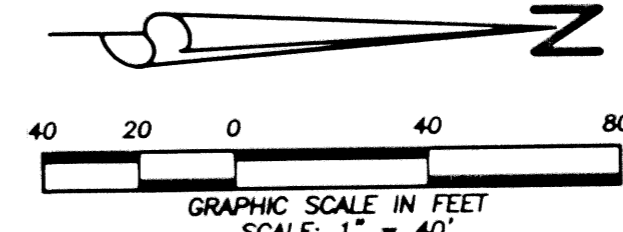


COVE SUBDIVISION

LYING IN SECTION 20, TOWNSHIP 41 SOUTH, RANGE 43 EAST
PALM BEACH COUNTY, FLORIDA

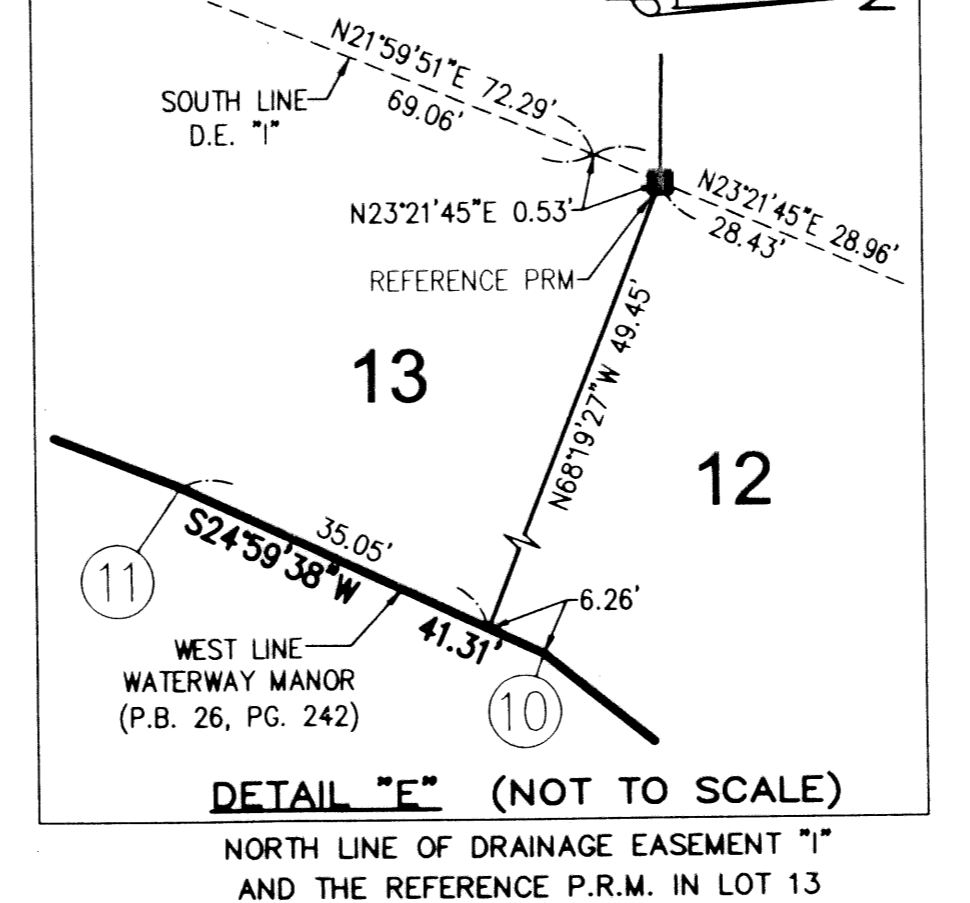
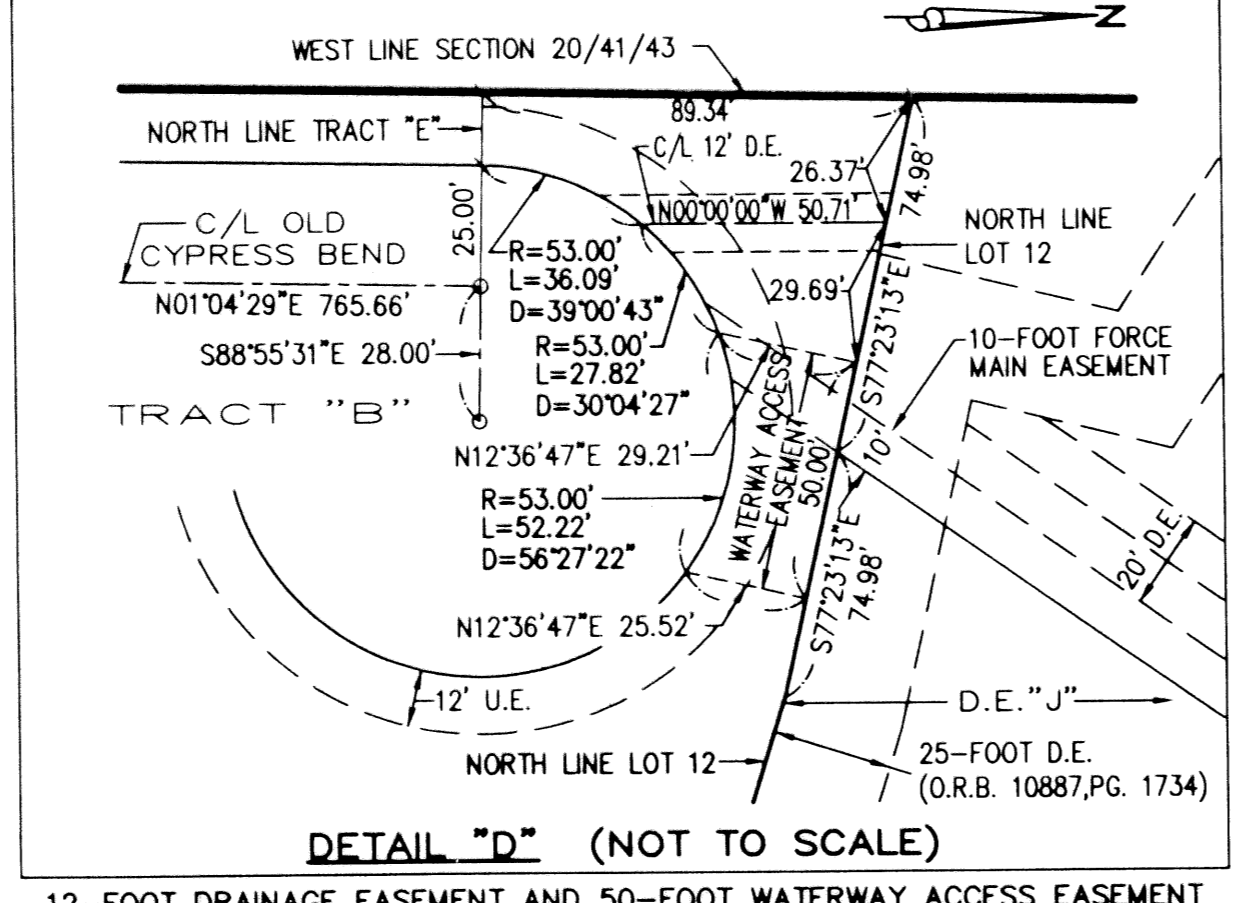
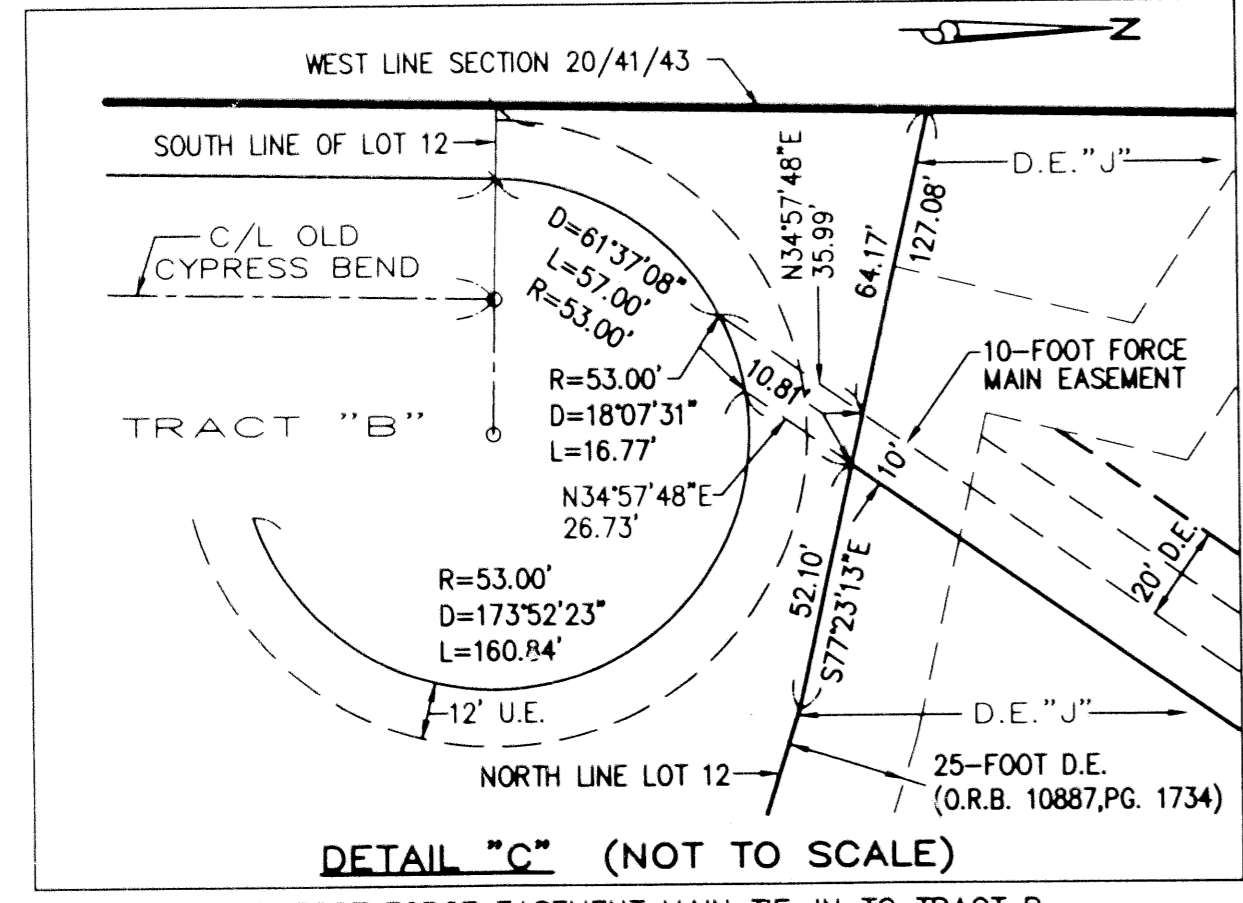
54



CURVE	RADIUS	DELTA	LENGTH
C10	25.00'	73°37'02"	32.12'

STATE PLANE COORDINATE VALUES		
NO.	NORTHING	EASTING
1	927583.1986	956408.6824
2	928683.3775	956429.3208
3	928681.0303	956549.4400
4	928641.0162	956548.6581
5	928606.6780	957471.6816
6	928276.4139	957465.2612
7	928300.8860	956805.6784
8	928292.3775	956775.0729
9	928277.7092	956751.0487
10	928240.8283	956721.1574
11	928203.3854	956703.7023
12	928151.9799	956683.2023
13	928098.7682	956668.5267
14	928051.2019	956666.0214
15	927977.7307	956676.1932
16	927952.7096	956686.5038
17	927874.0803	956738.6127
18	927805.2907	956786.1562
19	927738.4321	956826.1529
20	927707.1364	956839.0541
21	927567.3316	956836.3362

- SYMBOLS & LEGEND:**
- (R) = RADIAL
 - TYP = TYPICAL
 - PG. (S) = PAGE(S)
 - P.B. = PLAT BOOK
 - C/L = CENTER LINE
 - CH = CURVE CHORD
 - R = CURVE RADIUS
 - L = CURVE LENGTH
 - R/W = RIGHT-OF-WAY
 - LB = LICENSE BUSINESS
 - U.E. = UTILITY EASEMENT
 - P.B.CO. = PALM BEACH COUNTY
 - P.O.B. = POINT OF BEGINNING
 - L.E. = LANDSCAPE EASEMENT
 - F.M.E. = FORCE MAIN EASEMENT
 - D.E. = DRAINAGE EASEMENT
 - U.E. = UTILITY EASEMENT
 - W.L.E. = WATER LINE EASEMENT
 - CHB = OFFICIAL RECORD BOOK
 - P.O.B. = SET CONCRETE MONUMENT
 - R.C. = POINT OF COMMENCEMENT
 - L.A.E. = LIMITED ACCESS EASEMENT
 - P.R.M. = PERMANENT REFERENCE MONUMENT
 - N.G.V.D. = NATIONAL GEODETIC VERTICAL DATUM
 - O. = SET PERMANENT CONTROL POINT LB4431



LIDBERG LAND SURVEYING, INC.
675 West Indiantown Road, Suite 200, Jupiter, Florida 33458 TEL: 561-746-8454

CAD K:\AUTOCAD\00-156\PLAT\000-156.DWG			
REF	K:\AUTOCAD\		
FLD	CREW	FB.	PG.
OFF	MKH		JOB 00-156
CKD	D.C.L.	SHEET 4 OF 4	DATE 01/01/01
			DWG 000-156P

Subdivision Cove
PAGE 54
BOOK 92
FLOOD MAP # 117B
ZONING RTS
QUAD # 12
SE
TAZ 47
PUD NAME